

Built-Up Thermowells

Model TWB

According ANSI/ASME or DIN 43772

Features

- Materials according ISO 15156/NACE MR 01-75
- Selection of materials
- Standard and customer specifications
- DIN and ANSI/ASME process connections
- Various pipe size

Ratings

DIN up to PN100

ANSI/ASME up to 1500 lbs

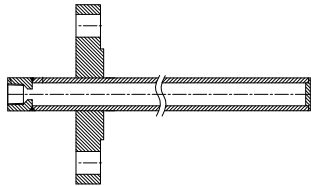
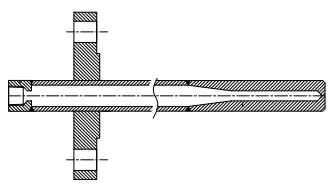
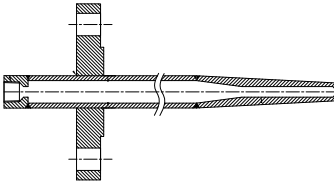
Applications

Chemical and petrochemical industry

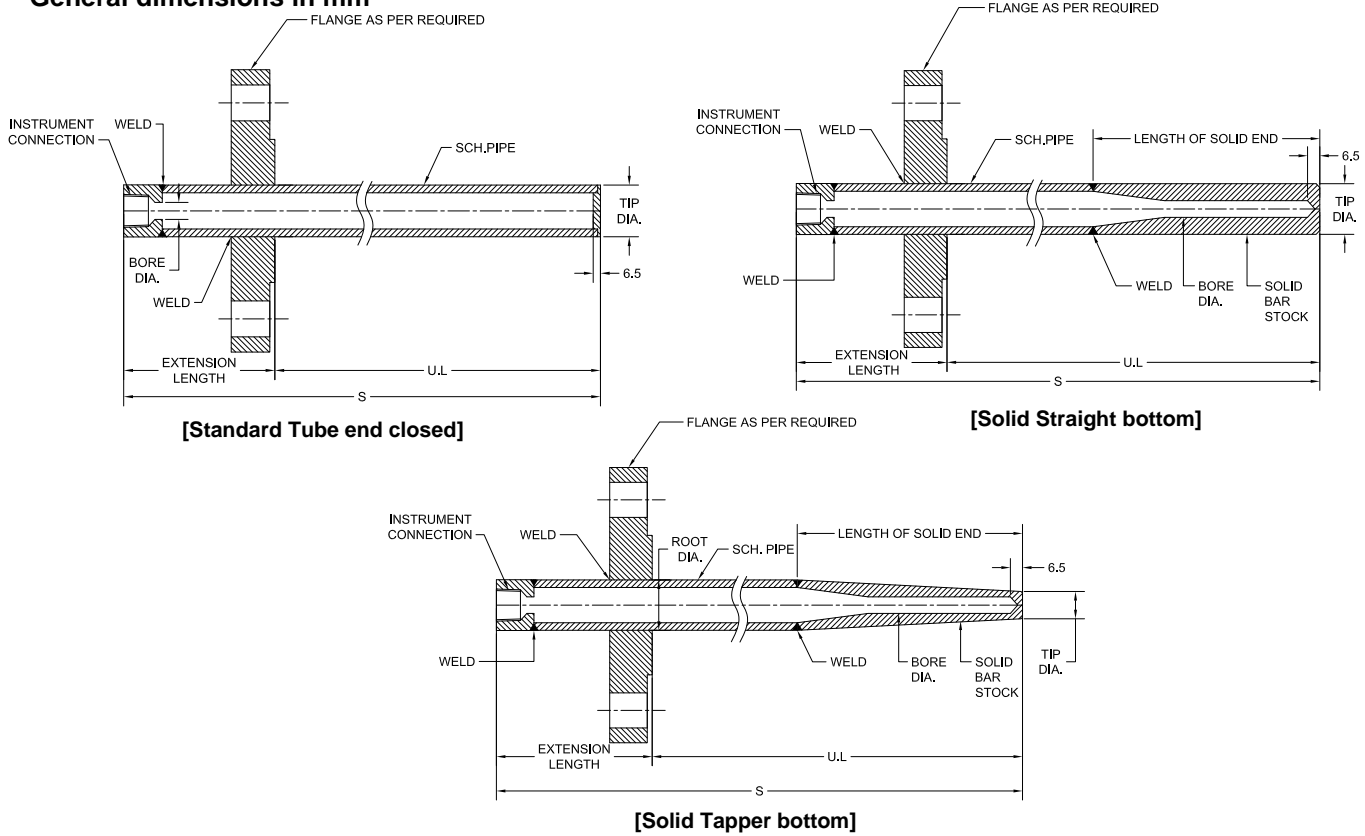
Machine and apparatus construction

Food and beverage industry

Pulp and paper industry

Technical specification	Standard (=)	SB	TB		
Built-up design					
	Built up design, Fabricated from pipe optional solid end piece according to customer specification				
Construction shank	Straight		Stepped Tapered		
Bore diameter in mm	6.6	7.0	9,8	10.5	12.5, others on request
Pressure rating	Depending on flange rating				
Process connection	Depending on flange rating				
DIN	DN25, DN40, DN50, DN80, DN100, others on request				
Size	DN25, DN40, DN50, DN80, DN100, others on request				
Pressure class	PN10, PN16, PN25, PN40, PN64, PN100, others on request				
ANSI/ASME	1, 1½, 2, 3, 4, others on request				
Size [inch]	1, 1½, 2, 3, 4, others on request				
Pressure class [lbs]	150, 300, 600, 900, 1500				
Facing	Raised face, Flat face, Ring joint type				
	Other forms, connections or standards are available on request				
Instrument connection	½" NPT (F) or ½" BSP (F)				
Material	Carbon steel, Stainless steel 304 (1.4301), 304L (1.4306), 316 (1.4401), 316L (1.4404), 316Ti (1.4571), 321 (1.4541) Monel, Hastelloy-B, Hastelloy-C, Inconel, Tantalum, Duplex, Nickel Other materials or coatings on request				
Certifications & tests	Material certificate DIN EN 10 204 3.1, Hydrostatic test, dye penetration test, X-ray, Hardness test, ISO 15156/NACE certificate				
Accessories, options	Thermometers, RTD, thermocouples				

General dimensions in mm



Order information

Process connection	U-length in mm	Instrument connection	Extension length	Bottom end type	Bore	Pipe Type	Material	Flange facing	Pressure rating	Options																		
ANSI Flanged (10) 1" (15) 1 1/2" (20) 2" (30) 3"	(U...) Specify length in mm ² E.g. (250) for u length 250mm	(04T) 1/2" NPT(F) (15T) 1/2" BSP(F)	(=) Standard, 57mm (EX) Specify Extension Length in mm E.g. (E100) for 100mm extension length	(=) Standard Tube end closed (SBX) Solid Straight bottom (TBX) Solid Tapper bottom	(6.6) 6.6mm (7.0) 7.0mm (8.5) 8.5mm (9.8) 9.8mm (10.5) 10.5mm (12.5) 12.5mm	(D) 1/2" SCH 40 (E) 1/2" SCH 80 (H) 3/4" SCH 80 (K) 1" SCH 80	(B) Carbon steel (C) 304 (1.4301) (CL) 304L (1.4306) (S) 316 (1.4401) (SL) 316L (1.4404) (SH) 321 (1.4541) (ST) 316Ti (1.4571) (M) Monel (H) Hastelloy C (N) Nickel (DU) Duplex (IN) Inconel	ANSI Flange (RF) Raised face (FF) Flat face ¹⁾ (RTJ) Ring joint type	ANSI Flange 150 300 600 900 1500	(NH) Tagging stamped (CC) Cap & chain stainless steel (BP) Buffed and polished (FL.) Specify flange as per material code (e.g. FLM flange material Monel) Certification (CDW2) Dye penetration test (CDRH) Rockwell hardness test (XR1) X-ray for weld joint (XR2) X-ray for bore concentricity (CDW9) 100 bar 1 min. (CD3) 3.1 Material certi. (CD5) NACE MR 01-75 / ISO 15156-2003 ³⁾ (CDMA) NACE MR 0175 / ISO 15156-2005 ⁴⁾ (CDPMI) Positive material certificate																		
											DIN Flanged (DN25) (DN40) (DN50) (DN80) (DN100)	others on request	others on request	(X) Please specify length of solid bottom in mm, e.g. TB150= Solid Tapper bottom, length 150mm	others on request	others on request	the flange facing depends on the process connection (nominal size and nominal pressure)	DIN flange PN10 PN16 PN25 PN40 PN64 PN100										
																			others on request	others on request	others on request	others on request	others on request	others on request				
																									others on request	others on request	others on request	others on request

1) only for size < 3" 3) only for material (H) and (DU) 4) only for material (SL)

How to order

Process connection	Type	U-length	Instrument connection	Extension length	Bottom end type	Bore	Pipe type	Material	Flange facing	Pressure rating	Options
15	TWB	1000	04T	=	TB150	9.8	E	SL	RF	150	NH