

Diaphragm seals for Pulp and Paper

Model DF24

Features

- Flush diaphragm design prevents clogging
- Easy to clean and maintain
- Interchangeable components
- Variety of wetted parts materials
- Rotating Ring

Pressure rating

15 psi up to 600 psi

1 kg/cm² up to 40 bar & kg/cm²

100 kPa up to 4000 kPa

Applications

Pulp manufacturing

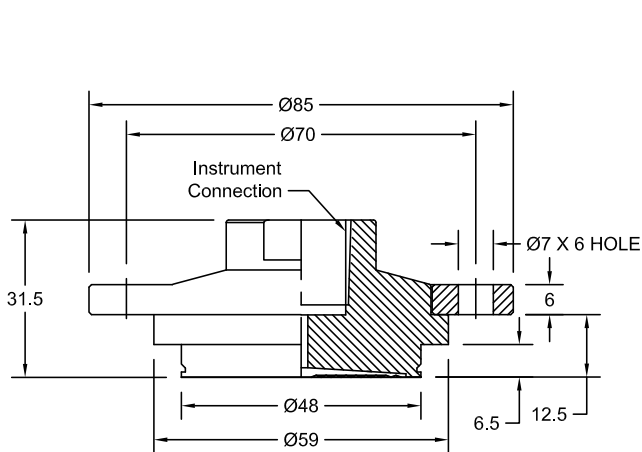
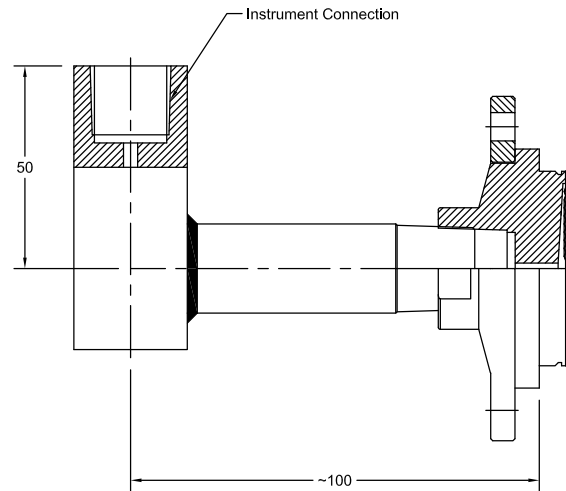
High viscosity fluids

Waste Process

Paper industry

Paint industry

Technical specification	DF24
Process connection size, flanged	Special purpose for interchangeability in industry
Construction Fill port	Flush diaphragm housing with rotating flange for easy alignment At the side with stainless steel ball and set screw
Maximum pressure Metal bottom housing [psi / bar]	600/40
Measuring principle	Welded Diaphragm to Top housing
Instrument connections [female]	3/8" BSP, 1/2" NPT, others on request
Material (wetted parts) Bottom housing Diaphragm	Stainless steel 316, SS316L, SS316 with Teflon coating, Hastelloy-C Stainless steel 316L, SS316L with Teflon coating, Hastelloy-C
Material (non wetted parts) Flange	Stainless steel 304, optional 316
Accuracy	Additional 0,5 % to the specified tolerance of the mounted instrument
Filling liquids (temperature range)	Glycerin (0/400 °F, -18/204 °C), Silicone (-40/600 °F, -40/315 °C), Halocarbon (-70/300 °F, -56/149 °C), Syltherm 800 (-40/750 °F, -40/400 °C), Vegetable oil (32/248 °F, 0/120 °C), Food grade silicone (-13/400 °F, -25/200 °C), Others on request, also depending on selected material and configuration.
Mounting	Direct, 90 Elbow, Direct with capillary
Accessories, options	NACE, pressure gauges, pressure switches, transducers, capillaries

General dimensions in mm

Direct

90° Elbow
Order information

Mounting	Type	Diaphragm	Bottom housing material	Instrument connection	Filling fluid	Options
(D) Direct	DF24	(S) 316L	(S) 316	(14T) 3/8" BSP (F)	(CG) Glycerin (direct mounted, -18/204 °C)	(NH) Tagging wired
(E) 90° Elbow		(SJ) 316L with Teflon Coating ¹⁾ (H) Hastelloy C	(L) 316L (SJ) 316 with Teflon Coating ¹⁾ (H) Hastelloy C	(04T) 1/2" NPT (F)	(CK) Silicone (direct mounted or with capillary, -40/315 °C) (CF) Halocarbon (direct mounted or with capillary, -56/149 °C) (HA) Syltherm 800 (direct mounted or with capillary, -40/400 °C) (GZ) Vegetable oil (direct mounted or with capillary, 0/120 °C) (CZ) Food grade silicone (direct mounted or with capillary, -25/200 °C)	(OF) Oil free (only filled with halocarbon) (FLS) Flange material SS316 (CA) Stainless steel armored capillary ²⁾ (CP) Stainless steel armored capillary with PVC sleeving ²⁾

¹⁾ Restricted to maximum temperature 200 °C

others on request

²⁾ Max length 30m, specify length in meter
EG. CP1.0 = CP with 1m

How to order

Mounting	Type	Diaphragm capsule material	Bottom housing material	Instrument connection	Filling fluid	Option
D	DF24	S	S	14T	CZ	CA1.0