

All stainless steel mercury actuated thermometer

Model MTS

Nominal size 100 mm or 150 mm

Accuracy: Class 1 (1%)

Features

- Rugged stainless steel construction
- Fast response
- Protection IP65
- High repeatability and small hysteresis
- Dry or liquid filled
- Rigid stem or bulb with capillary

Ranges

-38 ... 50 °C up to 0 ... 650 °C

-35 ... 120 °F up to 50 ... 750 °F

Applications

Chemical and petrochemical industry

Machine and apparatus construction

Food and beverage industry

Pulp and paper industry

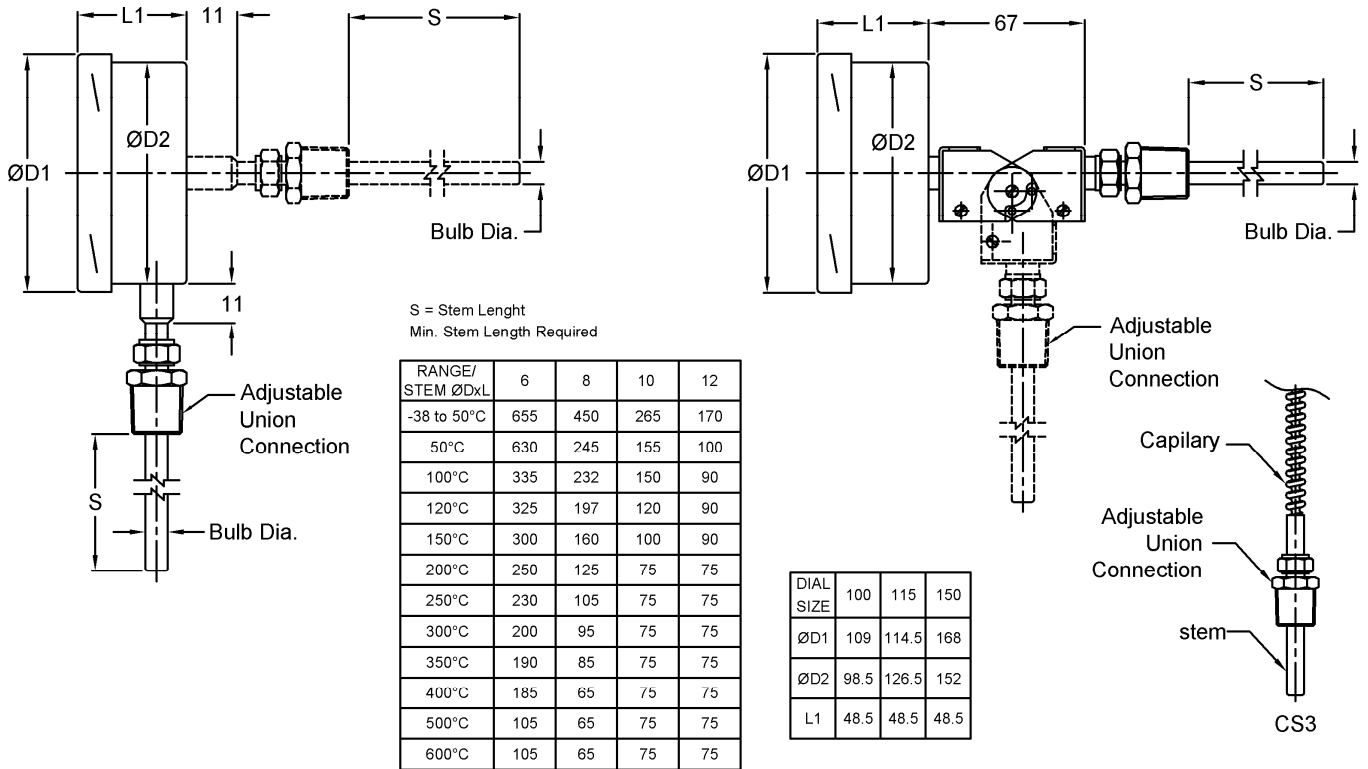


Technical specification	Rigid stem		With capillary	
	100	150	100	150
Dial size in mm	100	150	100	150
Construction	Cylindrical case with bayonet ring			
Measuring principle	Mercury actuated			
Range in °C	0/60 0/80 0/100 0/120 0/160 0/200 0/250 0/300 0/400 0/500 0/600 0/650 -10/50 -10/110 -20/40 -20/60 -20/100 -20/120 -20/180 -30/50 -30/70 -30/170 -38/50 Ranges in °F and dual scales on request			
Over temperature limit	Max. 130 % F.S.			
Stem or bulb diameter	6 mm, 8 mm, 10 mm, 12mm, others on request			
Lengths	80 ... 4000 mm, other length on request, min. length depends on bulb diameter (refer chart)			
Capillary length	N.A.		Max. 30 m	
Process connection	Plain 1/2" 3/4" 1" BSP / NPT (M), M20x1.5, M24x1.5, M27x2 Fixed, adjustable or with swivel nut			
Connection location	Back, lower, Every angle			
Material	Stainless steel 316 Stem Stainless steel 316L Case/ring Stainless steel 304 , optional 316L		Stainless steel 316 Flexible, SS 304 optional PVC covered	
Window	Instrument glass, optional laminated safety glass			
Dial	Aluminum, black markings on white background			
Pointer	Aluminum, black, optional micrometer pointer others on request			
Movement	Stainless steel 304			
Accuracy	Class 1			
Protection	IP65			
Filling liquids	Silicone			
Weight dry/filled in kg				
Accessories, options	Thermowells, dual scales, magnet spring- or inductive contacts, calibration certification			

All specifications are subject to change without notice.

IN.MTS Rev. F 16/02/2011

General dimensions in mm



Order information

Size	Bulb diameter	Length of bulb/stem	Length of capillary	Process connection	Connection size	Connection orientation	Range	Engineering units	Options									
(100) 100 mm	(06) 6 mm	115 to 4000 mm	(R) Rigid stem	(T) Turning nut	(50) 1/2" BSP	(L) Lower	0/ 60 0/ 80 0/ 100 0/ 120 0/ 160 0/ 200 0/ 250 0/ 300 0/ 400 0/ 500 0/ 600 0/ 650	°C	(NH) Tagging wired									
(150) 150mm	(08) 8 mm									(A) Capillary SS armored ¹⁾	(75) 3/4" BSP	(B) Back	(DA) Dial marking					
	(10) 10 mm									(P) Capillary SS armored with PVC covering ¹⁾				(10) 1" BSP	(E1) Every angle	(CS) Dual scale		
	(12) 12 mm																(10N) 1" NPT	(SG) Safety glass
	(64) 1/4"																	
	(96) 3/8"	(75N) 3/4" NPT	(FX) Front panel															
				(10N) 1" NPT	(FW) Surface plate													
						(M32) M32x2	(UF) U-clamp											
								-10/ 50 -10/ 110 -20/ 40 -20/ 60 -20/ 100 -20/ 120 -20/ 180 -30/ 70 -30/ 50 -30/ 70 -30/ 170 -38/ 50	(TM) 2" pipe mounting bracket									
										°F and dual scale on request	(EC) Contact type and function (see EC.1)							
		others on request	(GV) Silicon (max. up to 300°C)															
				others on request	other options on request													
						others on request	others on request											

2) Minimum stem length depends on stem diameter refer table "T1"

How to order

Size	Type	Bulb diameter	Length of bulb/stem	Length of capillary	Process connection	Connection size	Connection orientation	Range	Engineering unit	Options
100	MTS	08	125	R	CS2	50N	L	0/100	C	FW

Ashcroft India Pvt. Ltd.

Plot No.: 2306, G.I.D.C. Chhatral, Ta: Kalol, Dist.: Gandhinagar,
CHHATRAL 382 729, Gujarat, INDIA.
Telephone: +91 (0) 2764 233681/82/83 Fax: +91-2764-233440
Email: sales@ashcroftindia.com www.ashcroftindia.com

- North Zone : sales.delhi@ashcroftindia.com
- East zone : sales.kolkata@ashcroftindia.com
- West zone : sales.mumbai@ashcroftindia.com
- South zone : sales.chennai@ashcroftindia.com