

Digital Precision Calibrator

Model ST-2H

with interchangeable measuring modules
for pressure and temperature
1 or 2 independent channels
Accuracy 0,025 %; 0,05 % or 0,1 % F.S.
Current and voltage measurements

Features

- Integrated power source for transmitters testing optional
- Rigid ABS-housing
- 12 different engineering units
- Leak and flow measurements
- Min./Max. value and trip detection
- RS-232 interface
- Extensive data logging function optional

Ranges

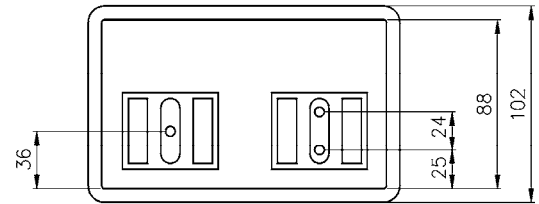
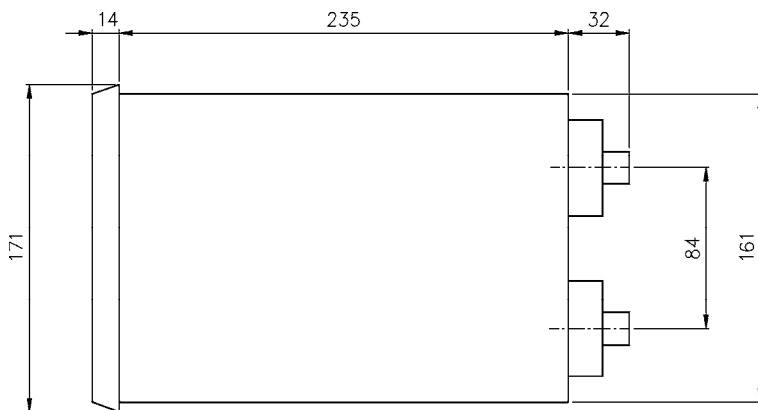
0 .. 0,6 mbar to 0 ... 700 bar
0 .. 0,25 in. H₂O to 0 ... 10.000 psi
-250 °C to 1820 °C
0 .. 30 VDC and 0 .. 50 mA



Technical specification	ST-2H
Indication	LCD-Display , alphanumeric, 2 lines a 16 characters, high 10 mm, optional with back light
Functions	
Standard	Pressure, differential pressure and temperature measurements with interchangeable modules Tare, Engineering unit select, Damping, Min./Max. value, Battery check, Zero adjustment, Leak rate, Flow/Velocity measurement, Display hold, Trip detect/deadband for switches, Voltage and current meas- urement for transducer output signals, Calculation of relative error (%-function), Differential pressure be- tween ports, Module calibration procedures and owners name (both password protected)
Optional	Power supply for transmitter testing, display back light Data logging and RS-232 port, Alarm switches (2)
Ranges	For modules see data sheet G6.modules
Pressure	0,6 mbar to 700 bar
Temperature	-200 °C ... 850 °C, 0/400 Ω (HQS-RT1) or 0/4000 Ω (HQS-RT2), -250 °C ... 1820 °C, -10 ... 100 mV (HQS- TC1)
Voltage measurement	0 ... 10 VDC Accuracy ±0,025 % F.S. 0 ... 30 VDC Accuracy ±0,10 % F.S.
Current measurement	0 ... 20 mA Accuracy ±0,03 % F.S. 0 ... 50 mA Accuracy ±0,05 % F.S.
Temperature influence for current and voltage measurements	±0,018 % / 10 K from -7 ... 49 °C (ref. 20 °C)
Power source	24 VDC, max. 25 mA
Repeatability	Ranges ≥ 2,5 mbar ±0,01 % F.S., < 2,5 mbar ±0,02 % F.S.
Resolution	±0,0016 % F.S.
Indication refresh rate	100 ms
Engineering units	
Pressure	mbar, bar, kPa, MPa, mmHg, cmH ₂ O, mmH ₂ O, kg/cm ² , psi, in. H ₂ O, in. Hg, ftSW, one user defined unit
Temperature	°C, °F, K, °R, Ω or mV
Damping	Floating average over 1 to 16 reading values
Output signals	RS-232, 9-pin; 300, 1200, 2400 or 9600 Baud
Data logging	Optional for 714 Data sets
Software	Upload of logged data with PTE-1S for Windows®
Alarm contacts	Optional 2 free programmable potential free relay outputs, Max. 110 VDC/125 VAC, max. 30 W/62 VA max. 1 A
Operation temperature	0 ... 49 °C
Extended operation temperature	-7 ... 49 °C
Storage temperature	-20 ... 70 °C
Temperature influence (module)	±0,07 % / 10 K from 0 ... 49 °C (ref. 20 °C)
Warm up time	5 minutes to rated accuracy, 30 minutes to complete stability
Material housing	ABS-plastic
Power supply	External AC adapter 9 VDC/500 mA - 110 VAC or 230 VAC/50 Hz, optional built in NiCad-power pack
Power pack life	20 hours (2 hours with switched on display back light)
Protection acc EN 60529/IEC 529	IP54
Weight [kg]	Base unit approx. 1,4; Module approx. 0,3
Options	Connections accessories, for modules see data sheet G6.modules

All specifications are subject to change without notice.

General dimensions [mm]



Rev.A

Order information

Base unit

Type	Power supply	Data logger, Alarm	Options
(ST-2H) Base unit	(X) No AC-adapter (1) 110 VAC, 60 Hz (2) 230 VAC, 50 Hz (3) 100 VAC, 50 Hz	(X) Without (D1) With, and PTE-1S upload program	(X) None (B) Display back light (N) Internal NiCad-power pack (A) Batteries (alkaline) (L) Integrated power source for transmitter testing (H) Carrying handle (P) Panel mounting brackets

How to order base unit

Type	Power supply	Data logging, Alarm	Option
ST-2H	2	D1	B=N=L

Accessories

Model	Description
LTP1	Pneumatic precision test pump with fine adjustment, range from -800 mbar up to 2 bar
TP1-40	Pneumatic precision test pump with fine adjustment, range from -950 mbar up to 40 bar
HTP1	Hydraulic precision test pump with fine adjustment, range up to 700 bar
AS1	Set of adapters and hose AS-1 for HQS-1 (tubing connection)
AS2	Set of adapters and flex tubing AS-2 for HQS-2 (Minimess)
ADP	Set of adapters, 2x 1/4 NPT female, 2x 1/8 NPT male 2x 1/8" tubing, T-piece 1/8 NPT female, T-piece 1/8" tubing
ADU	Set of adapters 1/2-20 UNF / 1/8 NPT female, 1/8 NPT male, 1/4 NPT female, 1/4 NPT male and 1/4" tubing connection
ELV	Vent valve (NPT)
FSL	Flexible tubing, 1,5 meters long, connection 1/2-20 UNF
RSK	RS-232 cable with 9-pin male/female connector

How to order accessories

Model
TP1-40=RSK=AS2

Ashcroft Instruments GmbH

Germany
 Max-Planck-Str. 1, D-52499 Baesweiler
 P.O. Box 11 20, D-52490 Baesweiler
 Tel.: +49 (0) 2401 808-0, Fax: +49 (0) 2401 808-125

France
 „206“ ZA Le Mandinet Rue des Campanules
 F-77185 Lognes
 Tel.: +33 (0) 1 60 37 25 30, Fax: +33 (0) 1 60 37 25 39

Website: www.ashcrofteurope.com e-Mail: sales@ashcrofteurope.com

United Kingdom
 Unit 5 William James House
 Cowley Road, Cambridge CB4 0WX
 Tel.: +44 (0) 12 23 39 55 00, Fax: +44 (0) 12 23 39 55 01